

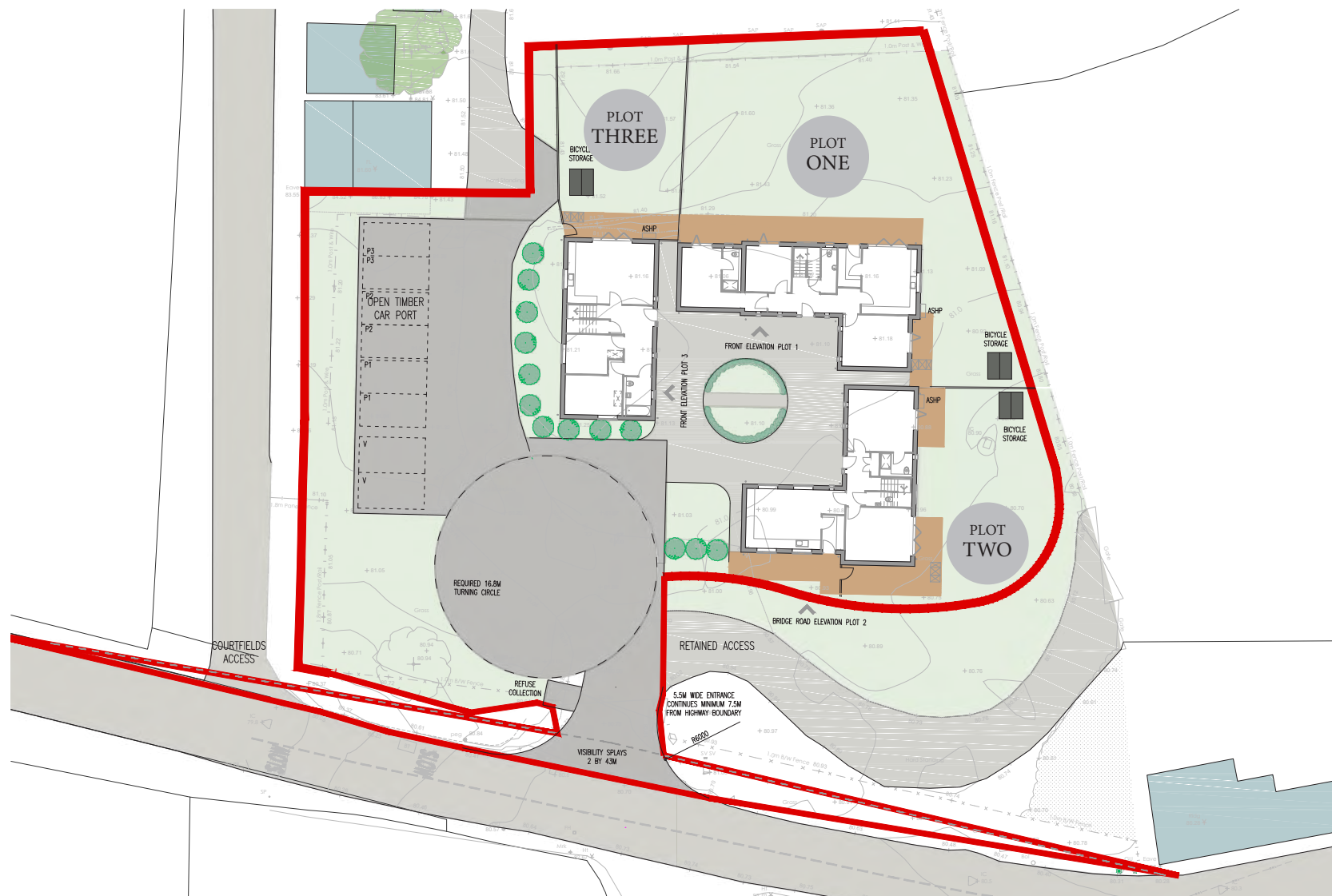


# Kennel Hill Barns

Butlers Marston, CV35 0NB

SPACE<sup>gk</sup>  
DEVELOPMENT SOLUTIONS





# PLOT ONE

materials:  
red brick to single storey  
stone to 1.5 storey  
stone parapets  
red header brick lintel detailing  
slate roof tiles  
painted timber window frames  
conservation roof lights

side obscured  
by plot 2 gable



FRONT ELEVATION  
1 : 100



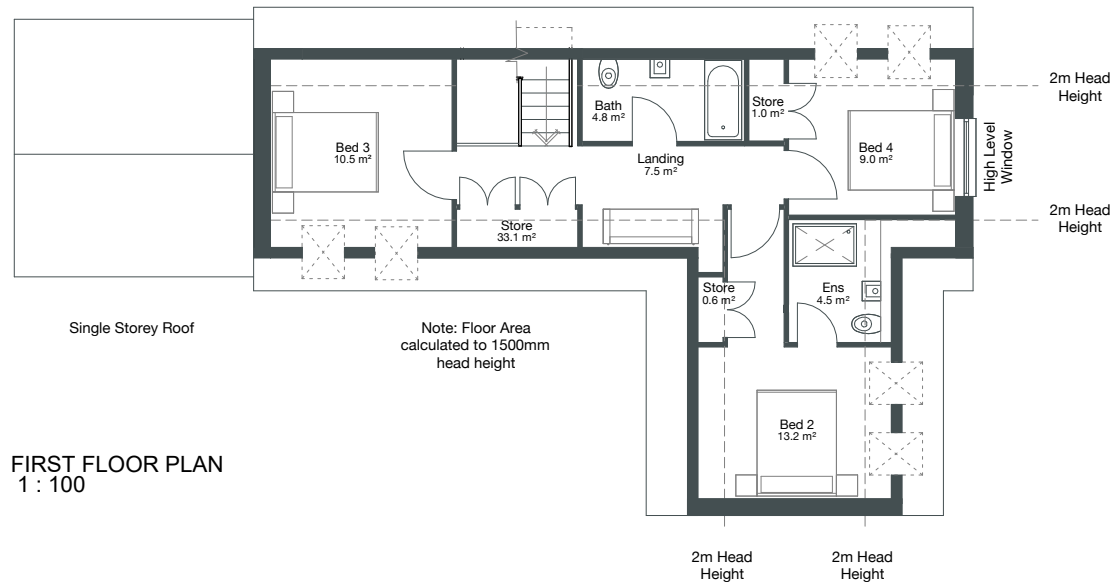
REAR ELEVATION  
1 : 100



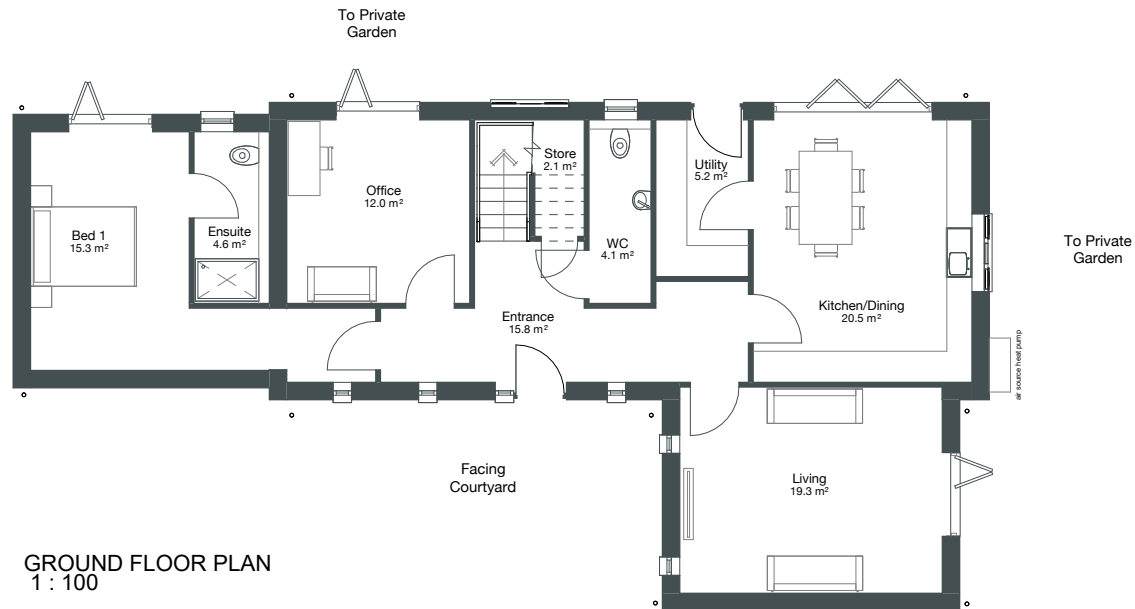
SIDE ELEVATION WEST  
1 : 100



SIDE ELEVATION EAST  
1 : 100



FIRST FLOOR PLAN  
1 : 100



GROUND FLOOR PLAN  
1 : 100

# PLOT TWO

materials:  
red brick to single storey  
stone to 1.5 storey  
stone parapets  
red header brick lintel detailing  
slate roof tiles  
painted timber window frames  
conservation roof lights



FRONT ELEVATION  
1 : 100



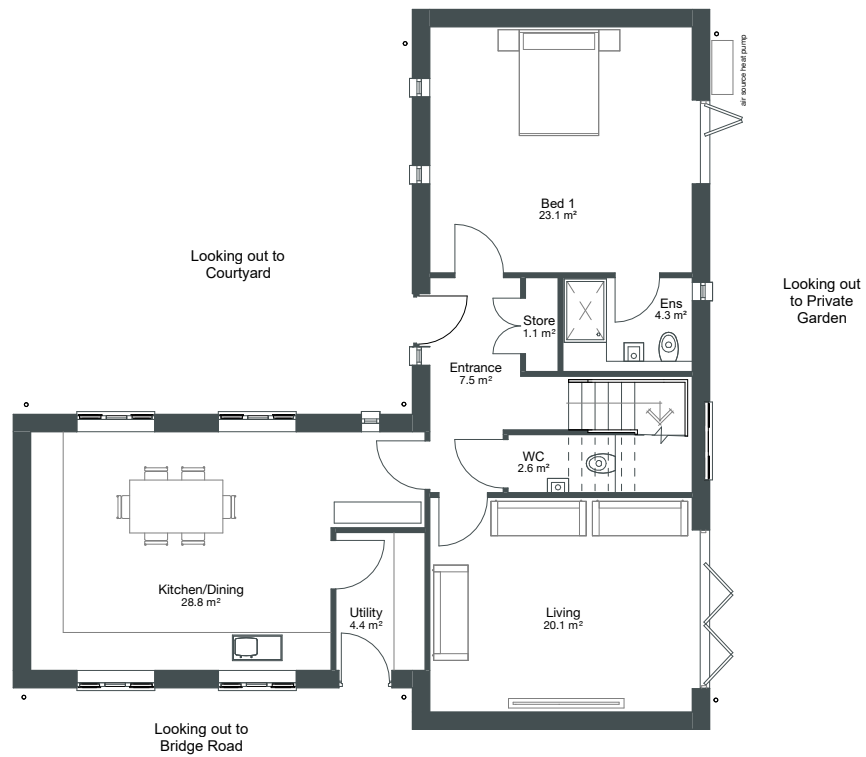
REAR ELEVATION  
1 : 100



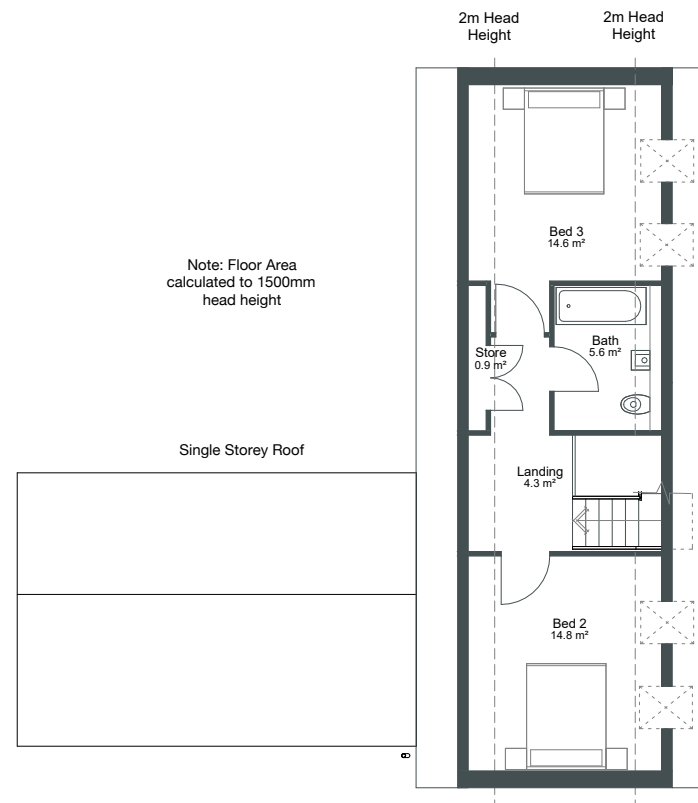
SIDE ELEVATION BRIDGE ROAD  
1 : 100



SIDE ELEVATION NORTH  
1 : 100



GROUND FLOOR PLAN  
1 : 100



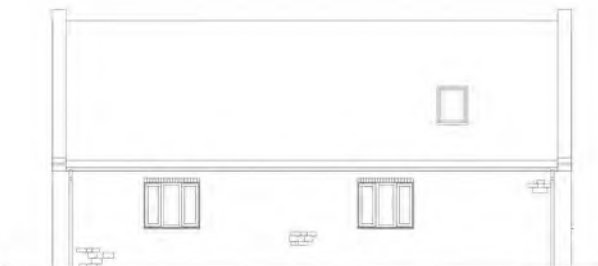
FIRST FLOOR PLAN  
1 : 100

# PLOT THREE

materials:  
stone  
stone parapets  
red header brick lintel detailing  
slate roof tiles  
painted timber window frames  
conservation roof lights



FRONT ELEVATION  
1 : 100



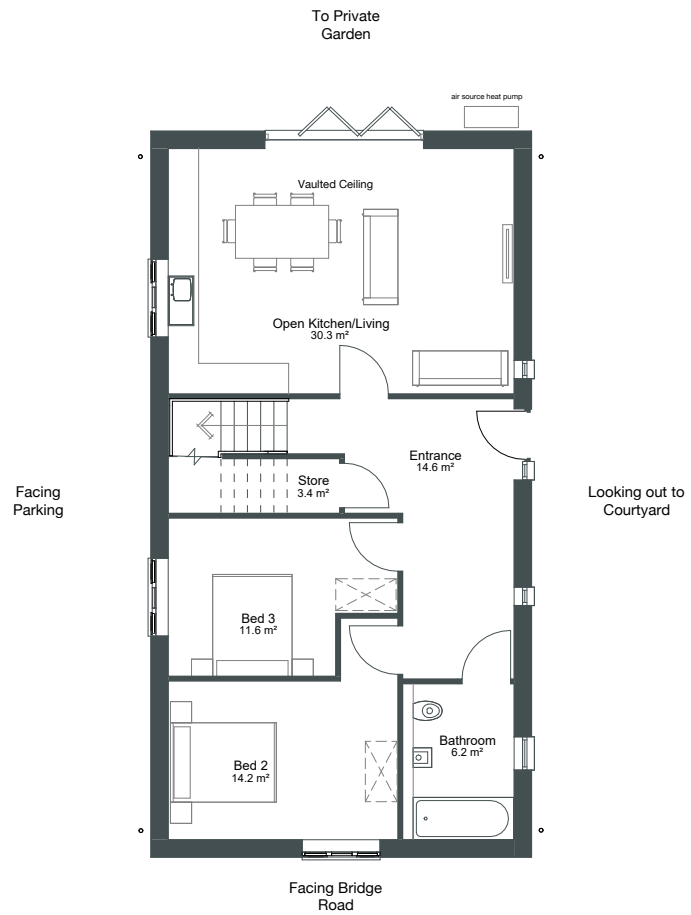
REAR ELEVATION  
1 : 100



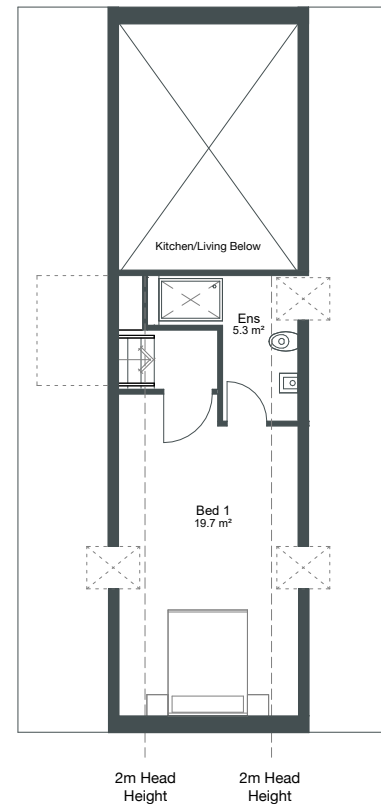
BRIDGE ROAD ELEVATION  
1 : 100



SIDE ELEVATION  
1 : 100



GROUND FLOOR PLAN  
1 : 100



FIRST FLOOR PLAN  
1 : 100



# CAR PORT

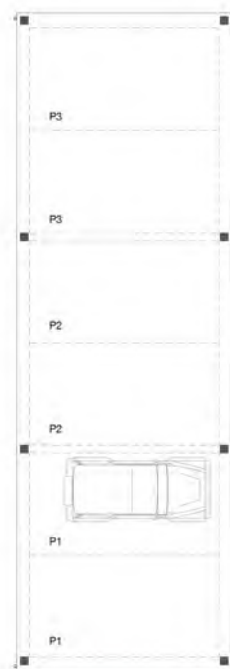
materials:  
timber posts and  
timber cladding to gable ends  
metal roof



FRONT ELEVATION  
1 : 100



REAR ELEVATION  
1 : 100



Facing Bridge Road

GROUND FLOOR PLAN  
1 : 100



SIDE ELEVATION  
1 : 100



BRIDGE ROAD ELEVATION  
1 : 100