



Kennel Hill Barns

Butlers Marston, CV35 0NB

SPACE^{gk}
DEVELOPMENT SOLUTIONS

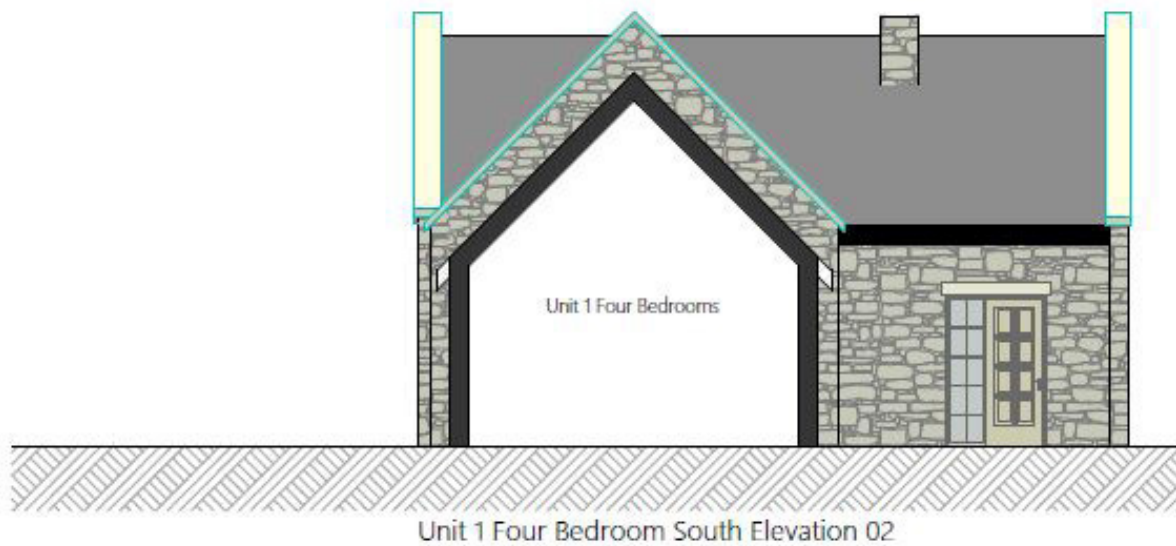
The approved plans are for the erection of three dwellings, briefly arranged, as follows:

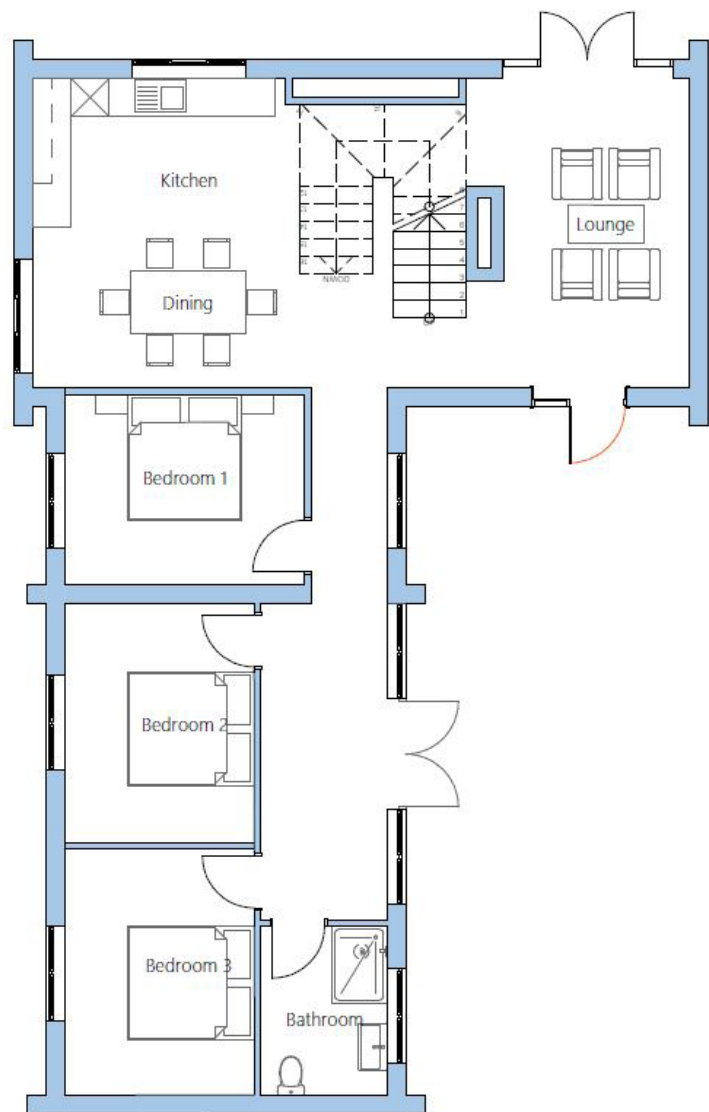
Unit 1:

Ground Floor: Hallway opening to Living, Dining and Kitchen Areas, Three Double Bedrooms and Bathroom.

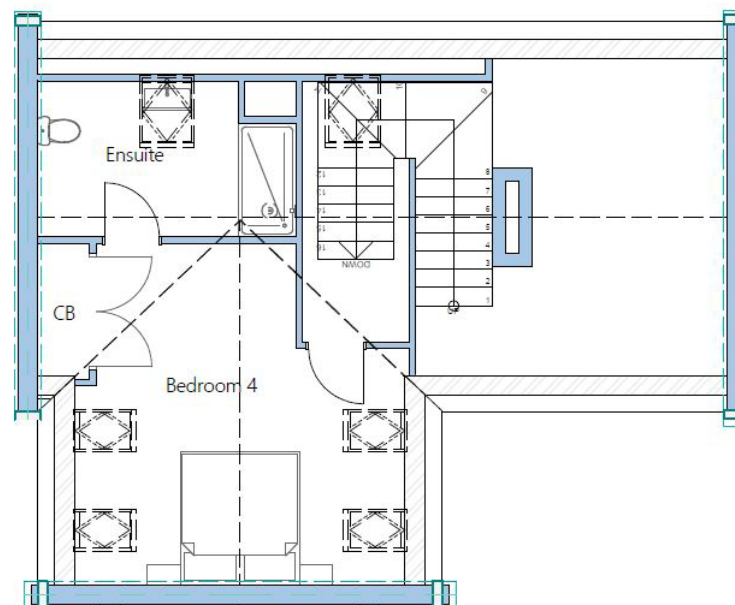
First Floor: One Double Bedrooms and En-suite Shower Room.

Projected Gross Internal Floor Area: 1,677 sq ft (155.8 sq m) approx.





N
Unit 1 Four Bedroom Ground Floor Plan
Scale 1:100



N
Unit 1 Four Bedroom First Floor Plan
Scale 1:100

Unit 2:

Ground Floor: Hallway opening to Living, Dining and Kitchen Areas, Snug, Double Bedroom and Shower Room.

First Floor: Two Double Bedrooms and Bathroom.

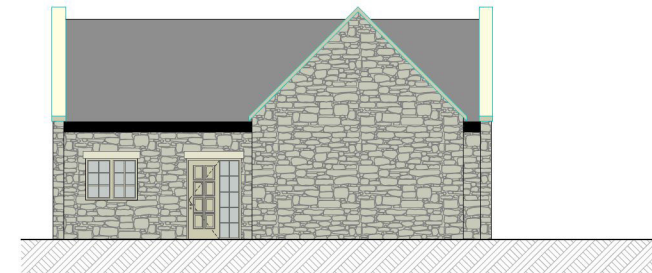
Projected Gross Internal Floor Area: 1,335 sq ft (124 sq m) approx.



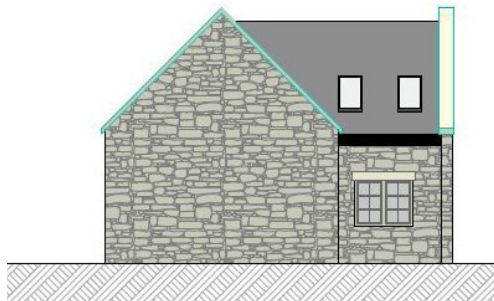
Unit 2 Three Bedroom North Elevation 01
Scale 1:100



Unit 2 Three Bedroom East Elevation 01
Scale 1:100



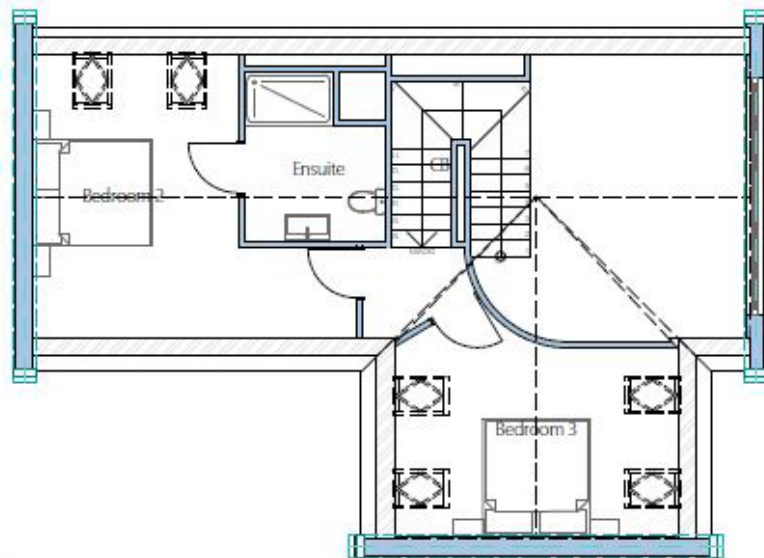
Unit 2 Three Bedroom South Elevation 02



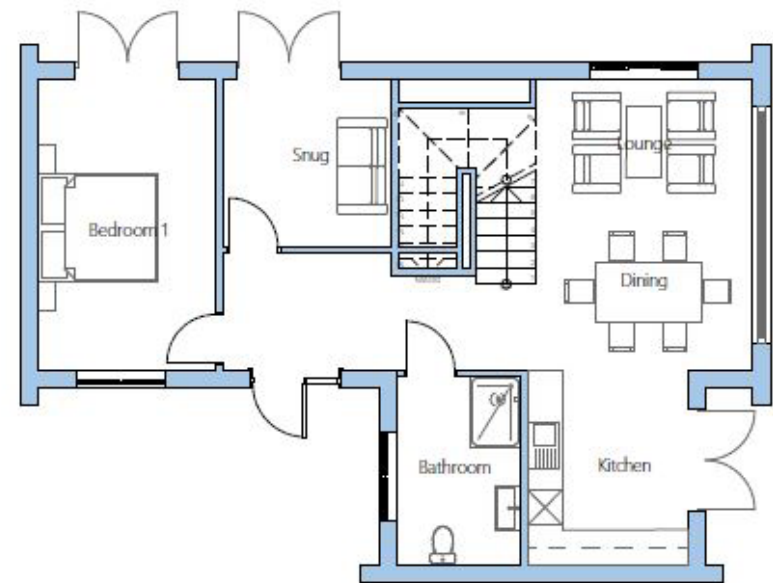
Unit 2 Three Bedroom West Elevation 02
Scale 1:100



Unit 2 Three Bedroom South Elevation 02
Scale 1:100



N
Unit 2 Three Bedroom First Floor Plan
Scale 1:100



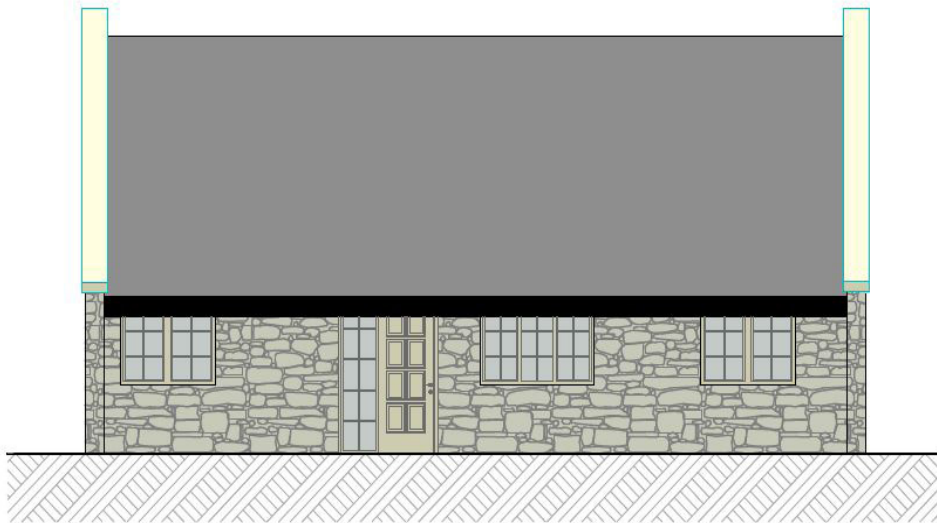
N
Unit 2 Three Bedroom Ground Floor Plan
Scale 1:100

0 1 2 3 4 5
Metres

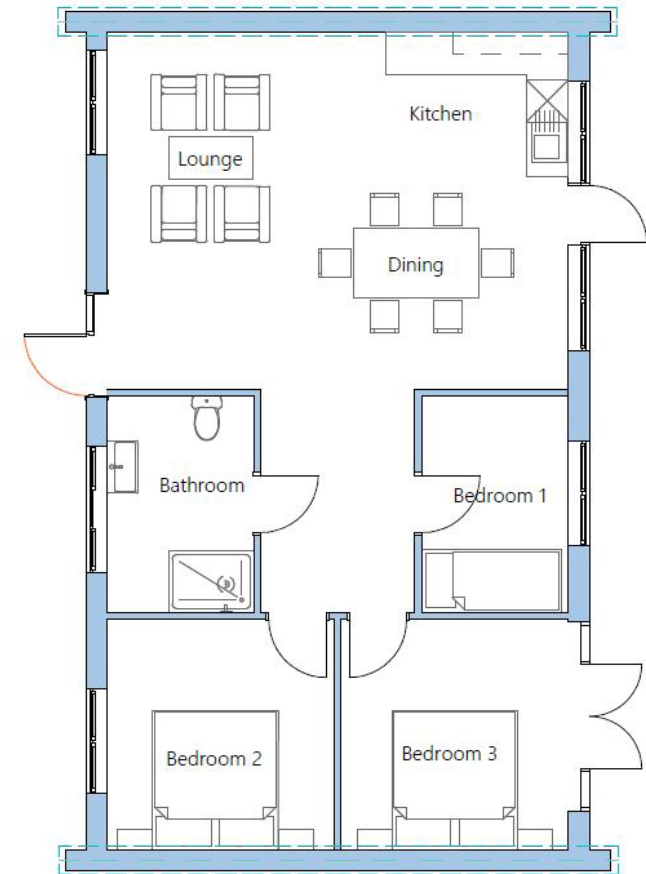
Unit 3:

Ground Floor: Opening into Kitchen, Living and Dining Areas, Three Double Bedrooms and Bathroom.

Projected Gross Internal Floor Area: 832 sq ft (77.3 sq m) approx.



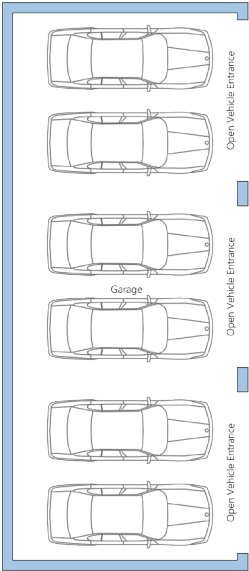
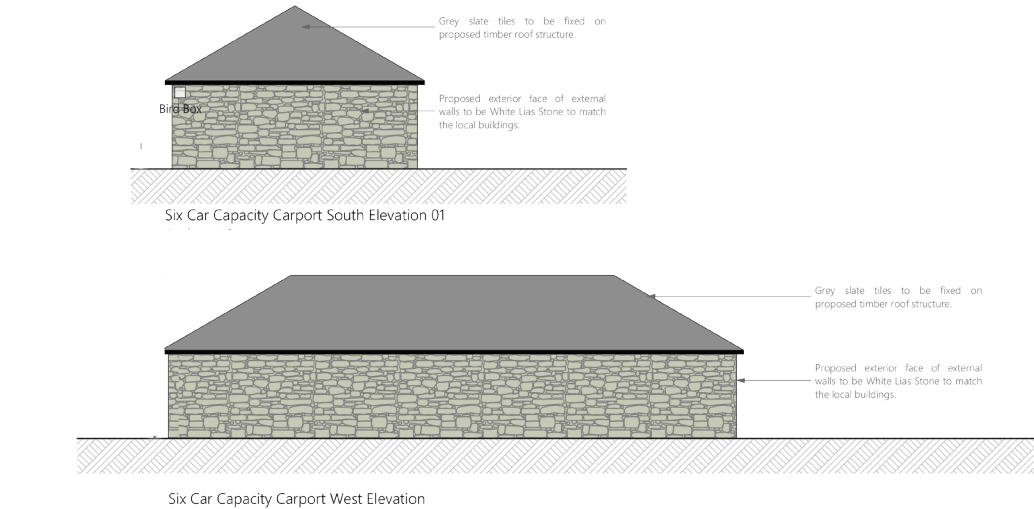
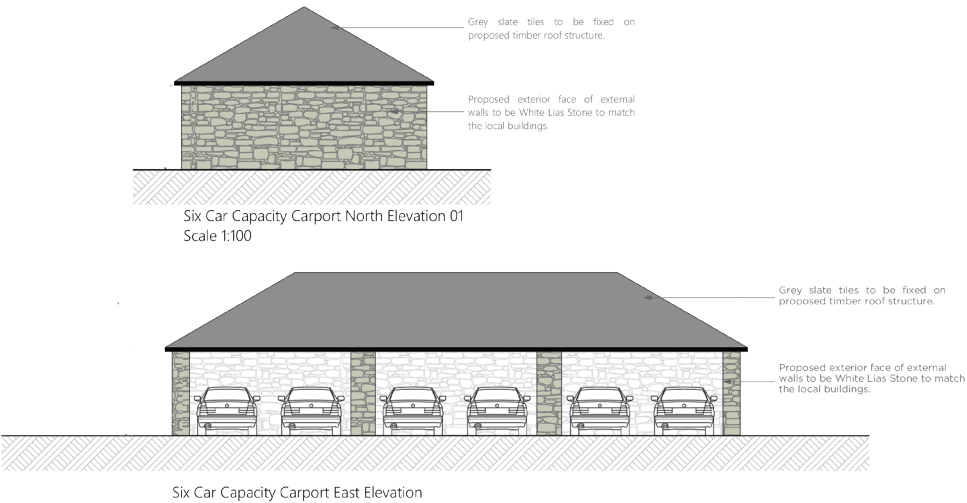
Unit 3 Three Bedroom West Elevation 02



N
Unit 3 Three Bedroom Ground Floor Plan
Scale 1:100

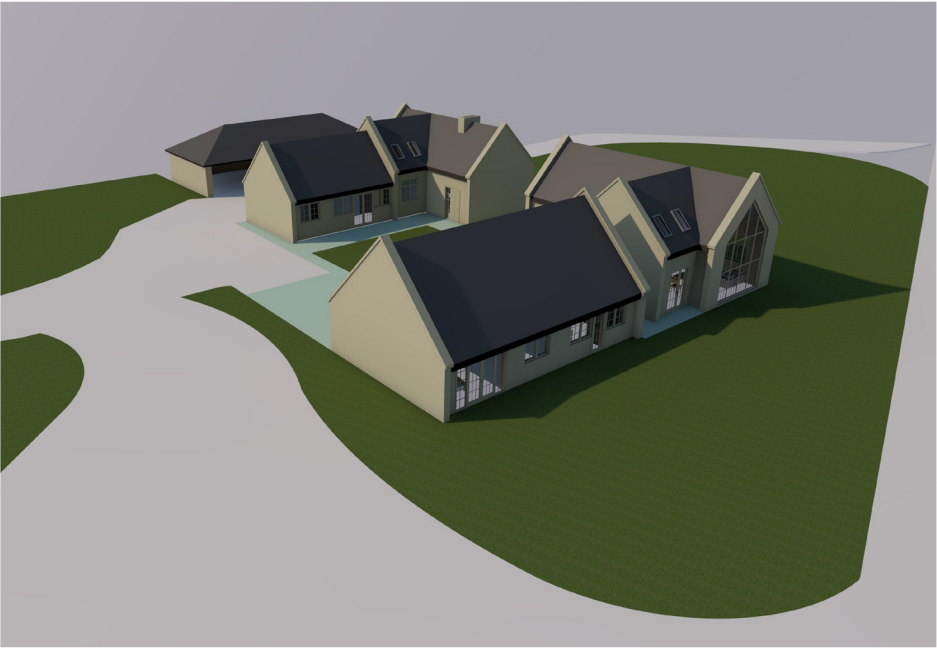
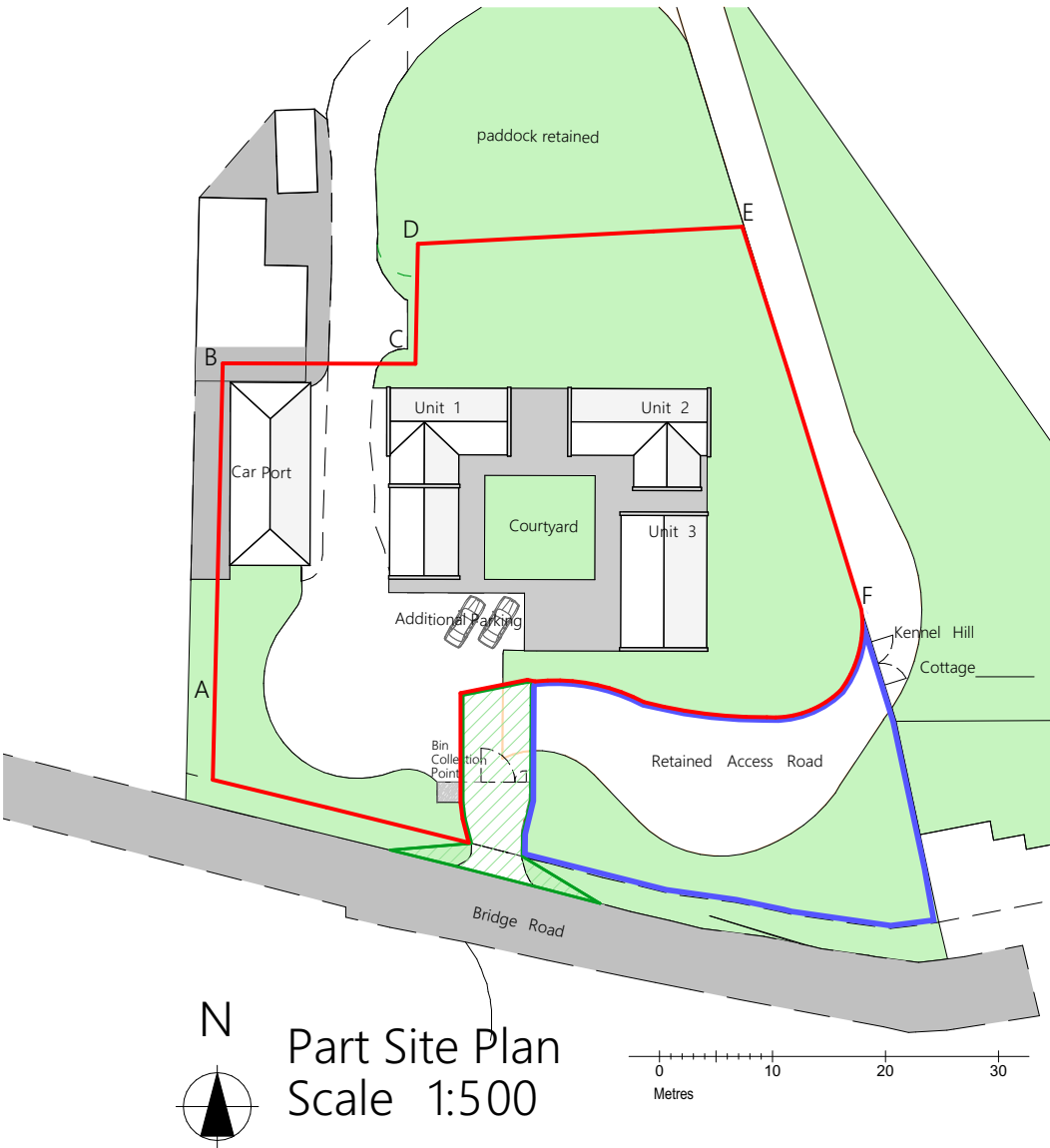
Car Port

Capacity for six cars.
Projected Gross Internal Floor Area: 1074.2 sq ft (99.8 sq m) approx.



Six Car Capacity Carport Ground Floor Plan

Site Plan:



Proposed Visual 01